

Windchill® ProductPoint®

Unleash Windchill® SharePoint® for Product Development

The increased demand for collaborative product development has meant that an awareness of the importance of collaboration has become a necessary skill for a new generation of "technological thinkers". Windchill® ProductPoint® enables collaborative product development, leveraging the latest social computing technologies, which converts the social networking skills of students into productive collaboration skills needed in industry.

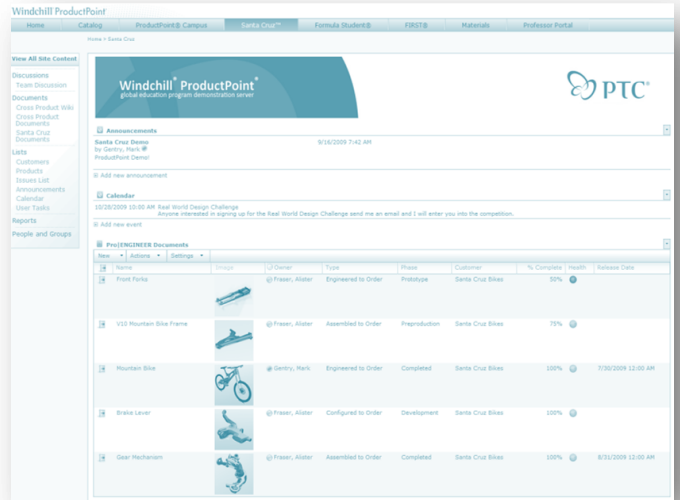
Deliver the product development education demanded by industry.

The increased demand for collaborative product development has meant that an understanding of Product Lifecycle Management (PLM) solutions, or an awareness of the importance of collaboration, has become a necessary skill for a new generation of "technological thinkers". The evolution of web 2.0 technologies and the increased demand for collaborative product development has brought about the advent of Social Product Development

Leverage the latest in social computing technology

Windchill® ProductPoint® is a Microsoft SharePoint-based solution that combines web 2.0 technologies such as friending/association, wikis, blogs and instant messaging with PLM processes such as vaulting, revision control and workflow to provide a social product development solution.

Microsoft SharePoint is fast becoming a popular solution for simple, file-based collaboration across all industries.



As Microsoft's collaboration infrastructure, SharePoint also offers a host of valuable social networking capabilities to better facilitate information sharing. SharePoint, however, has not been a sufficient technology solution for product development teams, which rely on rich authoring tools to create complex information assets, such as Pro/ENGINEER® and AutoCAD® files, technical documentation and engineering calculations. Windchill ProductPoint supports these rich authoring tools, includes robust visualization capabilities, and provides a purpose built solution for product development teams.

Key Benefits

- Quickly search and find the latest versions of the right files, driving greater team productivity
- Extend access to engineering content throughout the company, enabling more reuse and better decision-making
- Foster timely information sharing among team members through the use of SharePoint's Web 2.0 collaboration capabilities

- Get up and running quickly with a fast and easy deployment on top of an existing or new SharePoint Server, reducing total cost of ownership

- Adopt with a minimal learning curve, due to the familiar user interface and integrated environment

Windchill ProductPoint supports a variety of usage scenarios:

For smaller universities who are currently using shared drives storing their rich product development data, Windchill ProductPoint helps teams to work concurrently, find the right files, and share product development data throughout the course. Additionally, smaller universities will benefit by using Windchill ProductPoint to collaborate and share rich data with fellow classmates using Windchill-based solutions.

For larger universities, especially those with SharePoint deployments, Windchill ProductPoint complements Windchill by extending product development information to broader teams, and by fostering regional collaboration activities. Additionally, Windchill ProductPoint can be a valuable solution for those universities conducting pure research or local projects, and which need an easily administered project environment disconnected from other university systems.

And, with language localization, each site can be displayed in a student's preferred language.

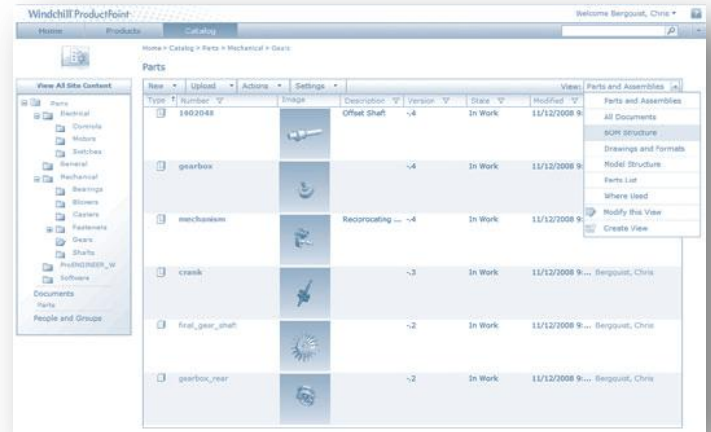
Features

Quickly collaborate on product development information

- Web-based workspaces
- Announcements and alerts
- Discussion forums, blogs and wikis
- Task, calendar and Microsoft Office integration

Easily access people, documents and information

- Real-time presence detection and communication
- Additional community and social networking capabilities delivered with optional SharePoint Server Web Part
- Document collaboration
- Lightweight 3D visualization
- Viewing and reporting of structured information (model structure and parts list, where used)



Easily author and handle documents

- Automatic lock and unlock
- View and restore past revisions
- Set document-specific security

Windchill interoperability

- Optional sharing of CAD data across Windchill ProductPoint and other Windchill systems²
- Optional support for presentation of Windchill information (e.g., task lists) within familiar SharePoint environment

Platform and Language Support

- Client support:
 - Windows clients only
 - Pro/ENGINEER client must be Pro/ENGINEER Wildfire 4.0 M060 or later
- Server support:
 - Windows Server 2003 and 2008
 - Windows SharePoint Services 3.0 (required, and included with Windows Server) or Microsoft Office SharePoint Server
- Standard language support:
 - English, German, Italian, Spanish, French, Simplified Chinese, Traditional Chinese, Japanese, Korean