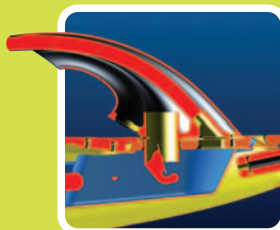


Windchill ProjectLink™

COLLABORATIVE Project Management for Extended
Product Development Teams

THE PRODUCT DEVELOPMENT COMPANY™



Windchill ProjectLink

A proven solution for collaborative project management during every step of the product lifecycle.

Leading manufacturers know what's needed to generate more value from product development:

better teamwork, better ideas, and better information delivered to the right people at the right time. It sounds simple in theory, but actually getting it all done has become more and more complex. At the core of the complexity are pressures to reduce costs and speed time-to-market – pressures that are often at odds with the desire to collaborate. To make matters worse, extended product development teams are often hampered by tools that don't communicate well with one another and restrict the ability to manage complex product information.

- › How can your company spark innovation with more and better ideas?
- › How can you reduce time-to-market and strip out activities that don't add value?
- › How can you engage customers and suppliers in product development to achieve stronger competitive differentiation?
- › How can you better manage projects for on-time, on-budget completion?
- › How can you drive conformity to corporate standards for important business processes?

These are just some of the challenges Windchill ProjectLink will help you solve.

It's About Collaboration.

Collaborating
with the extended
design team
and managing projects
has never been

EASIER.



Globalization and outsourcing have significantly increased the complexity of product development. Today, external suppliers can contribute 60% or more of the final product design. Time and distance constraints still get in the way of effective collaboration. Internal teams – management, sales, marketing, engineering, purchasing, manufacturing, and customer service – can be widely spread across different offices and time zones. Suppliers and customers are even further removed.

Windchill ProjectLink enables organizations to easily execute projects, and inspires collaboration among members of the extended product development team. It facilitates innovation by providing Web-based product development with all the tools necessary to bring globally dispersed design teams together as if working in the same room.

With Windchill ProjectLink, it's never been easier to engage the whole value chain for faster, smarter product development that yields better products on schedule and within budget.

As part of PTC's integral Product Development System (PDS), Windchill ProjectLink provides the proven solution manufacturers need to support product development collaboration, and project management and execution during every step of the product lifecycle.

- › Simple, easy-to-use interface and light weight visualization enables effective collaboration with cross-functional internal teams – as well as suppliers, manufacturing partners, and customers
- › Powerful collaboration facilitated through discussion forums, automated change notices, subscription, notification, and project management tools
- › Connected with Pro/ENGINEER Wildfire and a range of CAD systems
- › Optimize critical processes such as Product Development Collaboration and Project Management & Execution
- › Accelerate adoption and speed-to-value through services offered by PTC and our partners

The Most Effective Collaboration Tool in the World

Simple. Powerful. Connected.™

Simple

Simple, easy-to-use interfaces, self-administration of projects, and rich 3D visualization of complex product information.

Web-based

Deliver information relevant to specific roles, responsibilities, and tasks – organized in a logical, project-centric manner.

- Easy access to project information – directly from a Web browser
- Personalized subscription and notification capabilities keep development teams attuned to the latest changes

Self-Administration

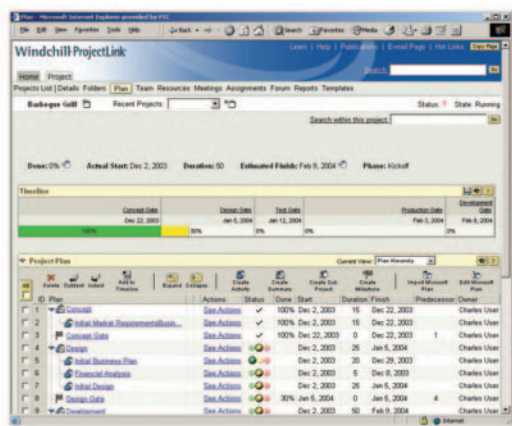
Easily create and manage projects on your own.

- Create projects from corporate or functional templates
- Invite team members by role using email
- Set up folders and add content from your desktop

Embedded Visualization

Enable users to easily identify, view, and use product information, without requiring the underlying authoring applications.

- Locate and verify content faster and easier with 3D thumbnails
- Provide feedback easily using embedded markup capabilities
- Option to automate document publishing to PDF format



Easy-to-use Web-based interface provides access to your projects, project information, tasks, and meetings as well as schedules, milestones, and activity status.

Powerful

Distributed, role-based collaborative project management.

Secure Design Collaboration

Bring together the extended product development team.

- Shared views of project information
- Interact through discussion forums and online meetings
- Compartmentalized, role-based access control

Project Management

Manage project plans with milestones, activities, tasks, deliverables, and resources – backed up with a full suite of reporting capabilities.

Project Information Management

Create and manage all types of project-related product information.

- Folder-based storage and controlled access to specifications, CAD models design notes, manufacturing plans, part definitions, bills of materials, and more
- Document check-in /check-out with iteration history
- Document and template standardization

Business Process Automation

Jump start cross-functional processes such as Six Sigma, APQP, and NPI using pre-built, workflow-driven project templates. Standardize and automate other business processes using workflow tools.

Connected

Link seamlessly to multiple mechanical and electrical CAD applications, as well as planning tools and desktop applications.

Part of PTC's Integral PDS

Seamless user experience with the PTC Product Development System, including Pro/ENGINEER® Wildfire™ and Windchill PDMLink™

Integrated with Other Applications

Designed to work with other everyday tools.

- Range of MCAD tools including support for Pro/ENGINEER, CADDs®, AutoCAD®, CATIA® V4, CATIA® V5, Inventor®, and SolidWorks®
- Major ECAD packages from Mentor® and Cadence®
- Drop-down menus within Microsoft® Office applications
- Bi-directional interoperability with Microsoft Project

Project Management & Execution

Managing and executing projects with large, dispersed teams
sharing common information, schedule, and budget.

In many manufacturing organizations, the ability to perform effective project management and execution remains fragmented, especially when projects cross department or corporate boundaries. Product development teams exchange information and manage projects with insufficient training and ineffective project management tools, which result in lost productivity and waste. Windchill ProjectLink automates and streamlines key cross-functional processes using best practice, workflow-driven project and document templates that jump-start product development projects.



Project Portfolio Management

Portfolio management is the product development function that links business strategy to product strategy and execution – enabling companies to select the best projects to work on. By delivering proven business metrics, such as net present value and internal rates of return, coupled with a configurable scorecard approach, Windchill ProjectLink helps managers make better trade-off decisions by continuously measuring the costs, risks, and payoff potential for every emerging product.

New Product Introduction

New product introduction is a formal, cross-functional business process for the development and introduction of new products. Windchill ProjectLink supports methodologies such as PACE™, Stage-Gate, and others that companies use to formalize and improve this critical process.

Quality

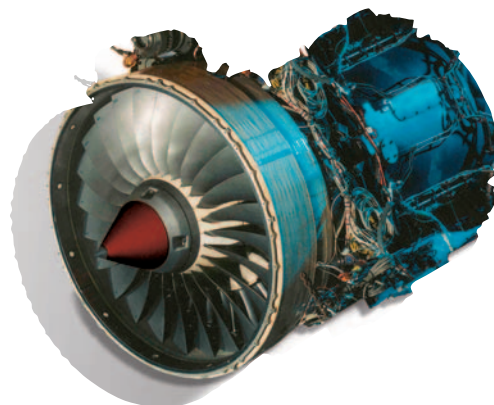
Manufacturers who embrace quality initiatives can realize tremendous financial and customer benefits. Windchill ProjectLink supports common quality initiatives such as implementing Six Sigma methodology to eliminate defects, advanced product quality planning (APQP), and ISO 9000 certification.

Realizable Benefits³

- Reduce travel-related expenses up to 50%
- Reduce manufacturing errors up to 50%
- Reduce product development cycle times by up to 40%

Processes Improved

- Project manage an engineering workgroup, change, or outsource development
- Project manage manufacturing outsourcing
- New product introduction (Stage-Gate; PACE; Toll-Gate)
- Quality strategies (Six Sigma, APQP, ISO 9000)
- Project portfolio and global project management



Realize The Full Potential of Windchill ProjectLink Through Services Delivered by PTC and Our Partners

Assess, Deploy, Optimize

To accelerate your return on investment, PTC applies an incremental implementation approach, which includes a comprehensive portfolio of Assess, Deploy, and Optimize offerings. Whether you're refining a process to eliminate design bottlenecks, or working to engage customers and suppliers, this approach provides real benefits that can help fuel growth and drive profitability.



Through our Assess offerings, PTC consultants and partners can identify collaboration opportunities and demonstrate exactly how to realize maximum value through Windchill ProjectLink. With Deploy, we help you implement the solution quickly and accelerate the return on your investment. Quick Start packages and pre-configured Windchill ProjectLink templates around key product development processes, such as Manufacturing Reviews and Execution of New Product Introduction, ensure the most cost-effective and efficient adoption of the solution. Pre-built Six Sigma and Portfolio Management reports align our client's reporting processes to industry-leading practices. And with Optimize, we work together to extend the value of Windchill ProjectLink by streamlining your collaboration processes to maximize personal and organizational productivity. PTC also offers programs for Collaboration System Design and Portfolio Strategy.

With nearly 20 years of product development experience – and thousands of successful deployments – PTC enables rapid implementations through both packaged and managed services that deliver immediate and lasting business value for companies of all sizes.

PTC offers a comprehensive Maintenance Support Plan that delivers additional productivity benefits:

- Ongoing investment protection and enhancement of PTC solutions.
- New software releases which may include feature, architecture, performance, and infrastructure enhancements.
- Direct access to PTC's ISO 9001-accredited technical support organization.
- Award-winning, online, self-service support tools with access to more than 18,000 online documents, updated weekly with the most current technical information.

PTC's Product Development System

Complete Product Development System

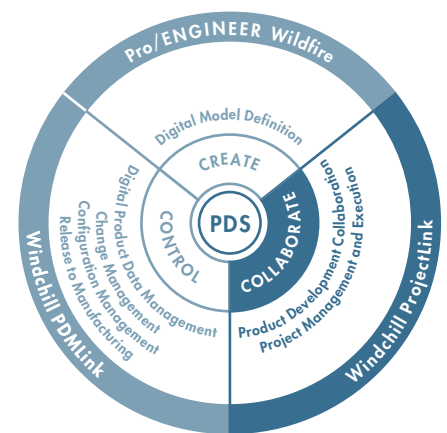
Leading Technology that Assures Success

PTC's Product Development System has the footprint of capabilities discrete manufacturers need to **Create** digital master models, **Collaborate** across the entire Digital Product Value Chain, and **Control** product information and product development processes efficiently over the entire product lifecycle. The pure **Internet** architecture of our PDS enables worldwide access. Its **Integral** design delivers a seamless user experience. Plus, PTC's PDS is **Interoperable** with other enterprise technologies.

PTC's integral Product Development System delivers the key capabilities manufacturers need – Create. Collaborate. Control.™ – to realize more value from product development. And our proven, incremental implementation approach can help companies of any size accelerate adoption, minimize risk, and speed time-to-value.

Industry Expertise that Optimizes Product Development Processes

Our Product Development System helps companies manage, enhance, and optimize their end-to-end product development processes with confidence. With unprecedented five-level testing, every element of the PDS has been validated and proven to support the critical product development improvements customers want. What's more, PTC has the broad process expertise necessary to ensure the PDS supports your company's unique product development needs.



Proven Deployment Approaches that Accelerate Adoption

PTC offers a wide range of standardized solutions for installation, configuration, migration, and optimization, including pre-packaged Quick Starts. PTC's proven methods encourage adoption of new processes to accelerate productivity gains. Our extensive role-based curriculum includes Web-based training, instructor-led programs, and interactive distance learning – all offered worldwide.

Pro/ENGINEER® Wildfire™
Unparalleled technology to create winning products.

Windchill ProjectLink™
Improving product development through collaboration.

Windchill PDMLink™
Controlling the data that drives product success.

To learn how Windchill ProjectLink helps some of the world's most innovative manufacturers create more value through collaboration,

please visit our website at:

www.PTC.com/go/projectlink



© 2004, Parametric Technology Corporation (PTC) – All rights reserved. Information described herein is furnished for informational use only, is subject to change without notice, and should not be construed as a guarantee, commitment, condition or offer by PTC. Customer experiences and achievements are based upon a single user experience and should not be construed as a guarantee or commitment by PTC. PTC, the PTC logo, The Product Development Company, Product First, Create Collaborate Control, Simple Powerful Connected, Pro/ENGINEER, Wildfire, Windchill, Windchill ProjectLink, Windchill PDMLink, CADDs, and all PTC product names and logos are trademarks or registered trademarks of PTC in the United States and in other countries. Inventor and AutoCAD are registered trademarks of Autodesk, Inc.; CATIA is a registered trademark of Dassault Systemes, S.A.; Solidworks is a registered trademark of Solidworks Corporation; Mentor is a registered trademark of Mentor Graphics Corporation; Cadence is a registered trademarks of Cadence Design Systems, Inc.; Microsoft and Windows are registered trademarks of Microsoft Corporation; and TIBCO is a registered trademark of TIBCO Software Inc. 352-PROJECTLINK-BRO-0204

PTC Worldwide Headquarters | 140 Kendrick Street | Needham Massachusetts 02494 | +1 781.370.5000 PTC.com